

# COVID-19 – Safety in Action – An Example from the Job Site

## Presentations and/or Q&A with:

Chris Trahan Cain, CIH, CPWR Executive Director

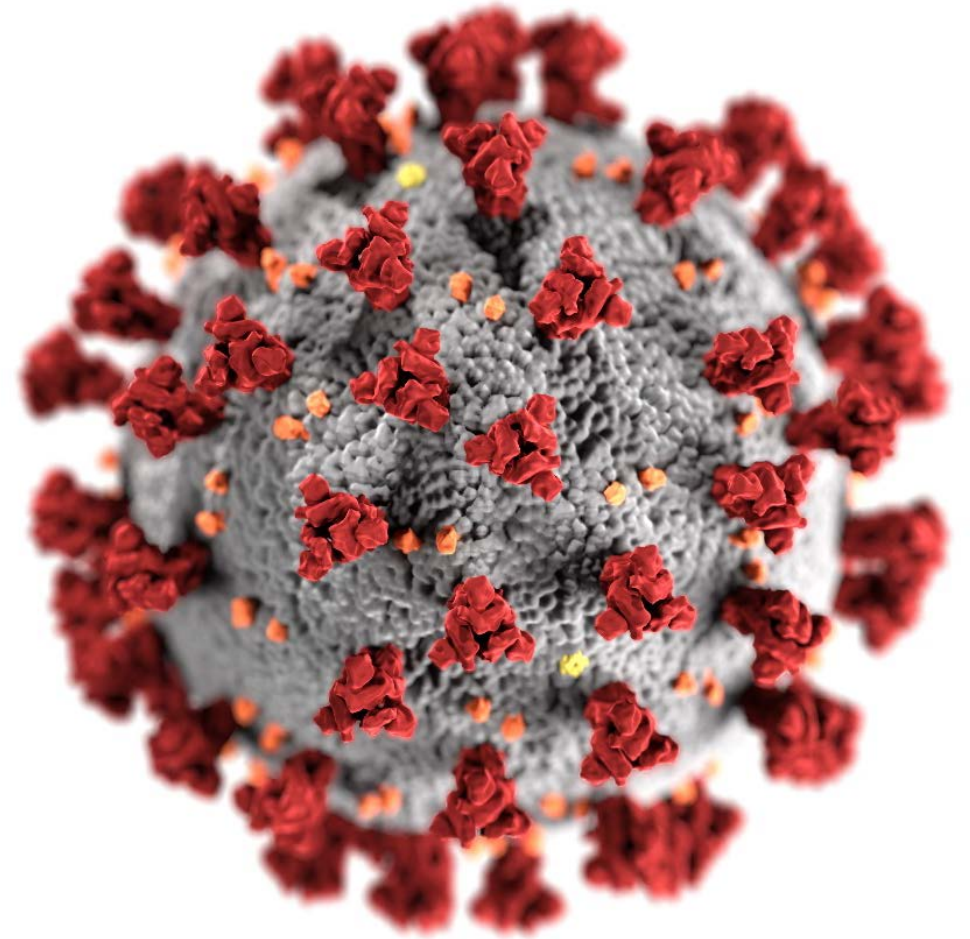
Amanda Edens, Deputy Assistant Secretary of Labor for Occupational Safety and Health, OSHA

G. Scott Earnest, Ph.D., P.E., C.S.P., Associate Director for Construction, the Office of Construction Safety and Health, NIOSH

Matt Eleazer, President, BAC Local 1 Oregon/Washington/Idaho/Montana and a member of the Oregon COVID-19 Joint Construction Safety Task Force

Scott Ketcham, Director of the Directorate of Construction, OSHA

# Construction and COVID-19 Updates



**G. Scott Earnest, Ph.D., P.E.**  
**National Institute for Occupational Safety and Health**  
**Centers for Disease Control and Prevention**  
**U.S. Department of Health and Human Services**

2 July 2020



[cdc.gov/coronavirus](https://cdc.gov/coronavirus)

# COVID Topics



- MMWR articles
  - Hospitalizations, Emergency Room Visits
  - Ease of Transmission, Support for Public Health
- Resuming Business Toolkit
  - Employer sheet
  - Restart Readiness Checklist
  - Worker Protection Tool
  - Returning to Work Infographic





# Hospitalizations were **6** times higher and deaths **12** times higher for COVID-19 patients with reported underlying conditions\*

## MOST FREQUENTLY REPORTED UNDERLYING CONDITIONS

CARDIOVASCULAR  
DISEASE



DIABETES



CHRONIC LUNG  
DISEASE



\*compared to those with no reported underlying health conditions

CDC.GOV

[bit.ly/MMWR61520](https://bit.ly/MMWR61520)

MMWR





In the 10 weeks following the declaration of the COVID-19 national emergency, visits to emergency departments declined for:

Heart attack

23% ↓

Stroke

20% ↓

Uncontrolled high blood sugar

10% ↓

People who are experiencing symptoms of these or any life-threatening conditions should **seek immediate emergency care**, even during the COVID-19 pandemic

CDC.GOV

[bit.ly/MMWR62220](https://bit.ly/MMWR62220)

MMWR



[https://www.cdc.gov/mmwr/volumes/69/wr/mm6925e2.htm?s\\_cid=mm6925e2\\_w](https://www.cdc.gov/mmwr/volumes/69/wr/mm6925e2.htm?s_cid=mm6925e2_w)



# After choir practice with one symptomatic person, 87% of group developed COVID-19



● Index case      ● 32 confirmed and 20 probable cases      ● unaffected person

**COVID-19 spreads easily**

- Avoid groups
- Stay at least 6 feet apart
- Wear face coverings

CDC.GOV

[bit.ly/MMWR51220](https://bit.ly/MMWR51220)

MMWR



[https://www.cdc.gov/mmwr/volumes/69/wr/mm6919e6.htm?s\\_cid=mm6919e6\\_w](https://www.cdc.gov/mmwr/volumes/69/wr/mm6919e6.htm?s_cid=mm6919e6_w)

# U.S. adults reported widespread support of public health measures to slow the spread of COVID-19\*



Agree people should always keep at least 6-feet apart

CDC.GOV



Agree groups of 10 or more people should not be allowed

[bit.ly/MMWR61220](https://bit.ly/MMWR61220)



Support stay-at-home orders and nonessential business closures

\*Online survey of 1,676 U.S. residents May 5-12, 2020

MMWR



[https://www.cdc.gov/mmwr/volumes/69/wr/mm6924e1.htm?s\\_cid=mm6924e1\\_w](https://www.cdc.gov/mmwr/volumes/69/wr/mm6924e1.htm?s_cid=mm6924e1_w)



# Resuming Business TOOLKIT

Coronavirus Disease 2019 (COVID-19)



## This toolkit includes the following materials:



**Employer Sheet** to introduce employers to the contents of the toolkit and how to use the materials in non-healthcare workplaces



**Restart Readiness Checklist** to help make returning to work and resuming business operations as safe and healthy as possible for employers, employees, and the public



**Worker Protection Tool** for employers to identify protective measures for workers when interacting with each other and the public



**Returning to Work Infographic** to remind employees how to protect themselves and others from COVID-19 and address their potential concerns about returning to the workplace



**Resources** to easily access additional information using hyperlinks, URLs, and QR codes





## Restart Readiness Checklist

### For Coronavirus Disease 2019 (COVID-19)

Use this checklist (for non-healthcare employers) as a guide to resuming business operations as safely and healthy as possible for you, your employees, and the public. Some items may need to be ongoing, so regularly revisit the checklist while COVID-19 cases exist. Only complete those items that apply to your business. See the Resources section for links and QR codes to web resources.

<https://www.cdc.gov/coronavirus/2019-ncov/downloads/community/Resuming-Business-Toolkit.pdf>



### Conduct a hazard assessment of the workplace.

| Item  | Completed                | Ongoing                  | Not Started              | Not Applicable           |
|---|--------------------------|--------------------------|--------------------------|--------------------------|
| Identify potential hazards that might expose workers to COVID-19.   | <input type="checkbox"/> | <input type="checkbox"/> | <input type="checkbox"/> | <input type="checkbox"/> |
| Use the Worker Protection Tool to identify appropriate engineering, administrative, and personal protective equipment (PPE) options for your workplace. | <input type="checkbox"/> | <input type="checkbox"/> | <input type="checkbox"/> | <input type="checkbox"/> |

### Plan for what to do if an employee is sick at work.

| Item   | Completed                | Ongoing                  | Not Started              | Not Applicable           |
|--|--------------------------|--------------------------|--------------------------|--------------------------|
| Immediately separate employees who appear to have symptoms [6] from others in the workplace. | <input type="checkbox"/> | <input type="checkbox"/> | <input type="checkbox"/> | <input type="checkbox"/> |
| Have a procedure for safe transport of a sick employee to home or a healthcare facility.     | <input type="checkbox"/> | <input type="checkbox"/> | <input type="checkbox"/> | <input type="checkbox"/> |

### Develop an action plan for suspected/confirmed cases.

| Item   | Completed                | Ongoing                  | Not Started              | Not Applicable           |
|--|--------------------------|--------------------------|--------------------------|--------------------------|
| <b>If it has been fewer than 7 days</b> since the sick employee has been in the facility:                          |                          |                          |                          |                          |
| Close off areas that have been used by the sick person for long periods of time (e.g., their desk or workstation). | <input type="checkbox"/> | <input type="checkbox"/> | <input type="checkbox"/> | <input type="checkbox"/> |
| Wait 24 hours (or as long as possible), then clean and disinfect [12] the area.                                    | <input type="checkbox"/> | <input type="checkbox"/> | <input type="checkbox"/> | <input type="checkbox"/> |
| Open outside doors and windows to increase air circulation during the waiting period.                              | <input type="checkbox"/> | <input type="checkbox"/> | <input type="checkbox"/> | <input type="checkbox"/> |



## Resources referred to throughout the Toolkit



1. [Coronavirus \(COVID-19\)](https://go.usa.gov/xvHEE)  
go.usa.gov/xvHEE



6. [Symptoms of Coronavirus](https://go.usa.gov/xvHmR)  
go.usa.gov/xvHmR



2. [Workplaces During the COVID-19 Pandemic](https://go.usa.gov/xvucp)  
go.usa.gov/xvucp



7. [What to Do If You Are Sick](https://go.usa.gov/xvHsF)  
go.usa.gov/xvHsF



3. [Restaurants and Bars During the COVID-19 Pandemic](https://go.usa.gov/xvuc7)  
go.usa.gov/xvuc7



8. [Discontinuation of Isolation for Persons with COVID-19 Not in Healthcare Settings](https://go.usa.gov/xvHem)  
go.usa.gov/xvHem



4. [Interim Guidance for Businesses and Employers to Plan and Respond to Coronavirus Disease 2019 \(COVID-19\)](https://go.usa.gov/xvHma)  
go.usa.gov/xvHma



9. [Caring for Someone Sick at Home](https://go.usa.gov/xvHew)  
go.usa.gov/xvHew



5. [Directory of local health departments](https://bit.ly/LHDDirectory)  
bit.ly/LHDDirectory



10. [When and How to Wash Your Hands](https://go.usa.gov/xvz7T)  
go.usa.gov/xvz7T

<https://www.cdc.gov/coronavirus/2019-ncov/downloads/community/Resuming-Business-Toolkit.pdf>

# For More Information

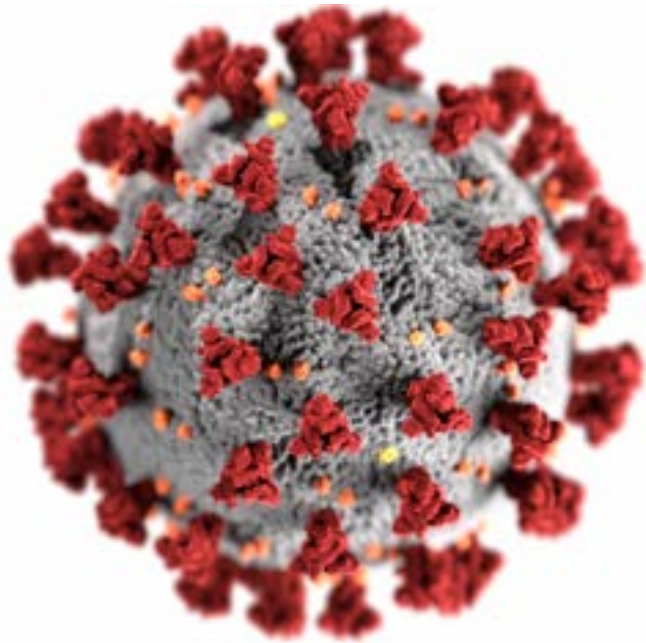


- CPWR COVID-19 Clearinghouse <http://covid.elcosh.org/>
- CDC COVID-19 Construction: <https://www.cdc.gov/coronavirus/2019-ncov/community/organizations/construction-workers.html>
- CDC Interim Guidance for Businesses and Employers to Plan and Respond to Coronavirus Disease 2019 website: [www.cdc.gov/coronavirus/2019-ncov/community/guidance-business-response.html](http://www.cdc.gov/coronavirus/2019-ncov/community/guidance-business-response.html)
- CDC Prepare your Small Business and Workers for the Effects of COVID-19 website: [www.cdc.gov/coronavirus/2019-ncov/community/guidance-small-business.html](http://www.cdc.gov/coronavirus/2019-ncov/community/guidance-small-business.html)
- NIOSH Directory of Construction Resources: <https://www.cdc.gov/niosh/construction/default.html>
- OSHA COVID-19 Construction: <https://www.osha.gov/SLTC/covid-19/construction.html>
- CDCINFO: 1-800-CDC-INFO (1-800-232-4636) | TTY: 1-888-232-6348 | website: [www.cdc.gov/info](http://www.cdc.gov/info)



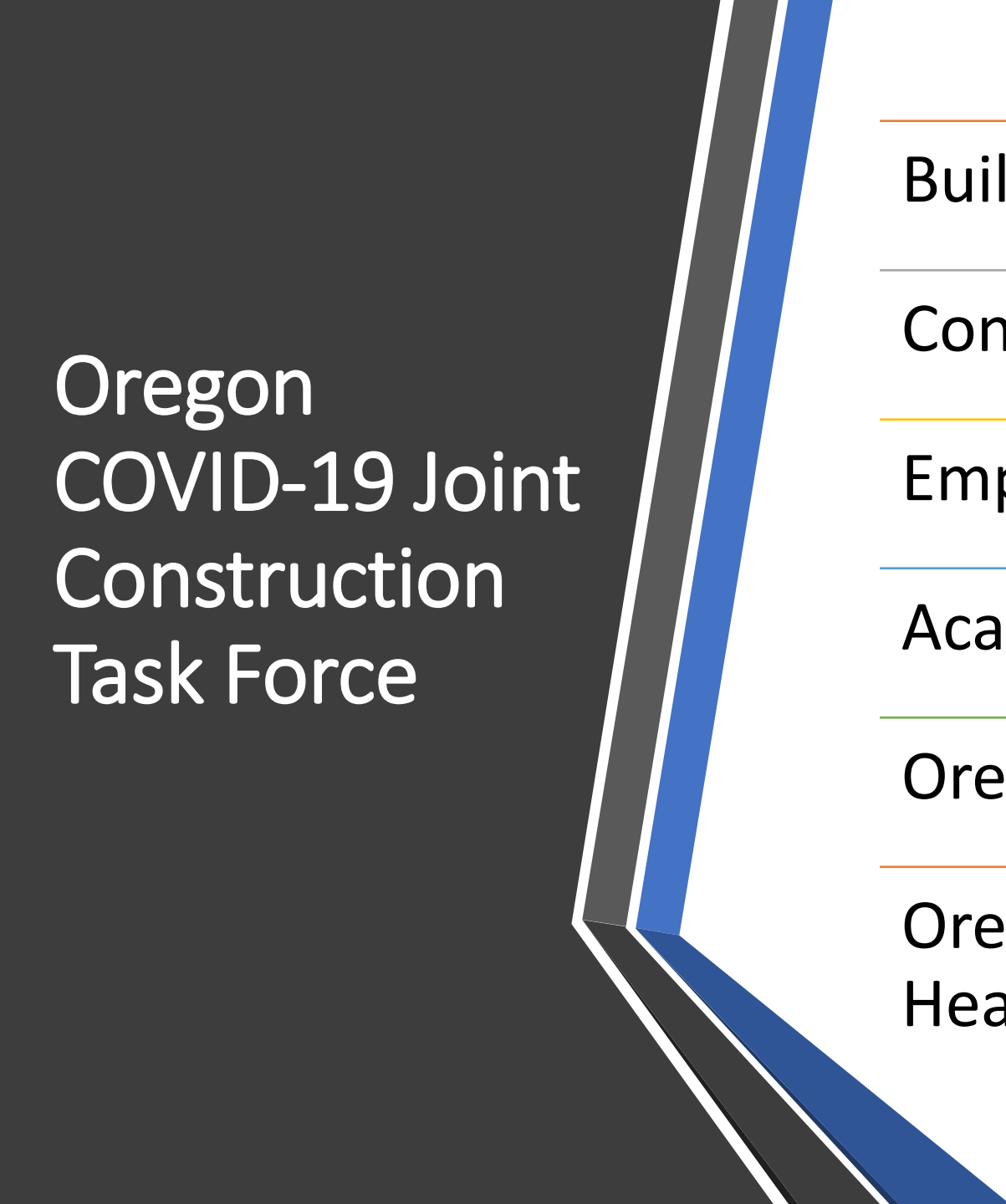


# COVID-19 Safety in Action – An Example from the Job Site



**Matt Eleazer, President,**

International Union of Bricklayers and Allied Craftworkers, Local 1 Oregon/Washington/Idaho/Montana  
& Oregon COVID-19 Joint Construction Task Force Member



# Oregon COVID-19 Joint Construction Task Force

---

Building Trades Unions

---

Contractors

---

Employer Representatives

---

Academics

---

Oregon OSHA

---

Oregon Institute of Occupational  
Health Sciences

# Oregon COVID-19 Joint Construction Task Force

---

Zoom Meetings 2 to 5 times a week

---

Small groups assisted by Oregon OSHA consultants visiting jobs

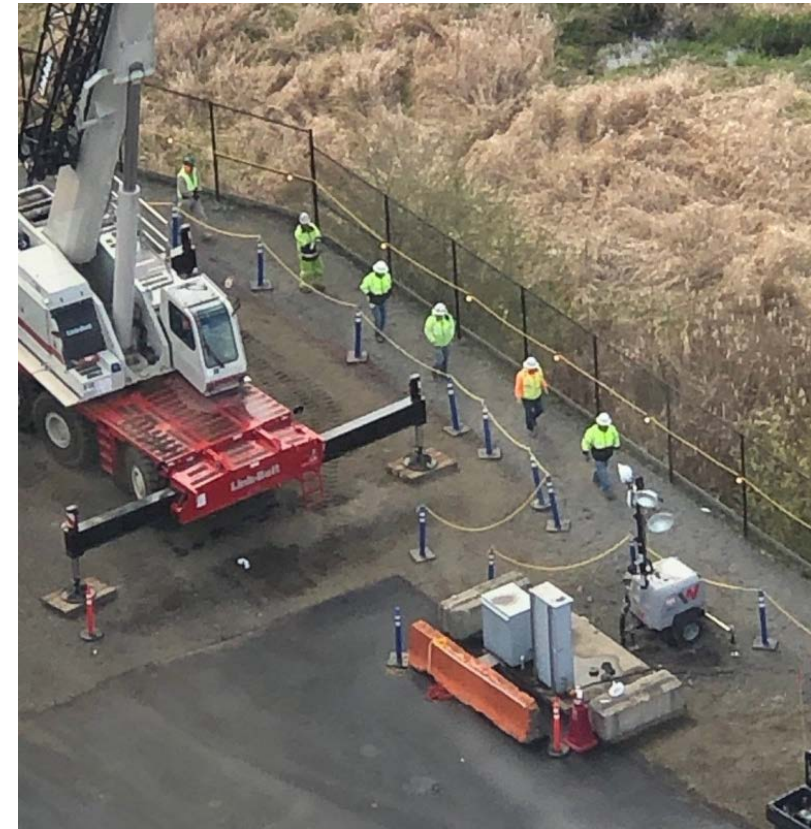
---

Monitoring health information and government guidelines

---

Identifying and sharing information and best practices





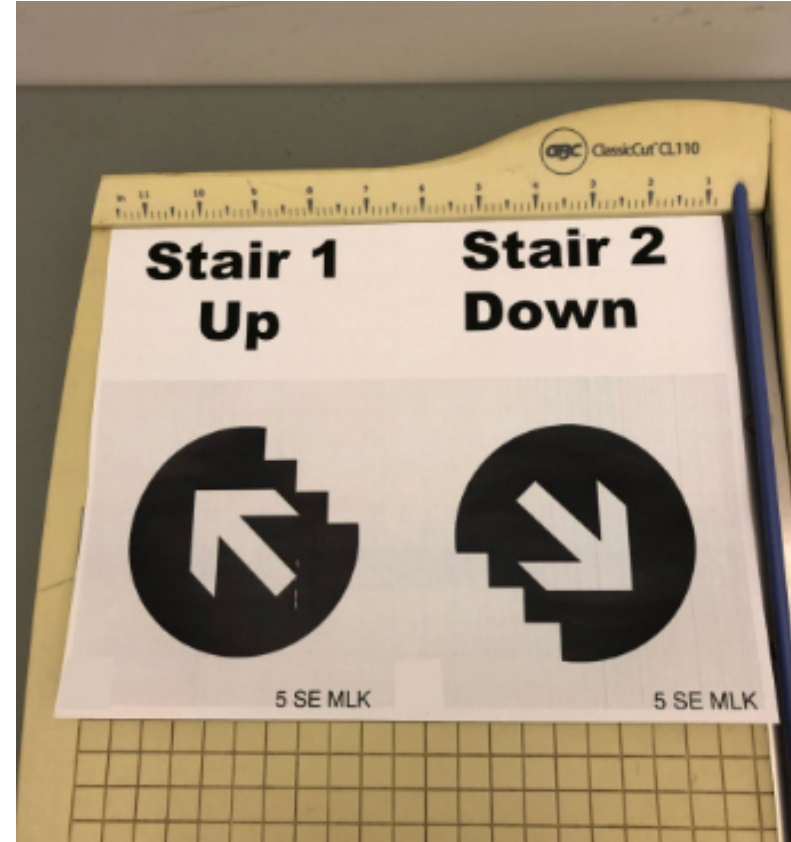
# Marking Choke Points and Walking Areas

---

Photos courtesy of the Oregon Building Trades <http://www.oregonbuildingtrades.com/covid-19-safety-photographs/>

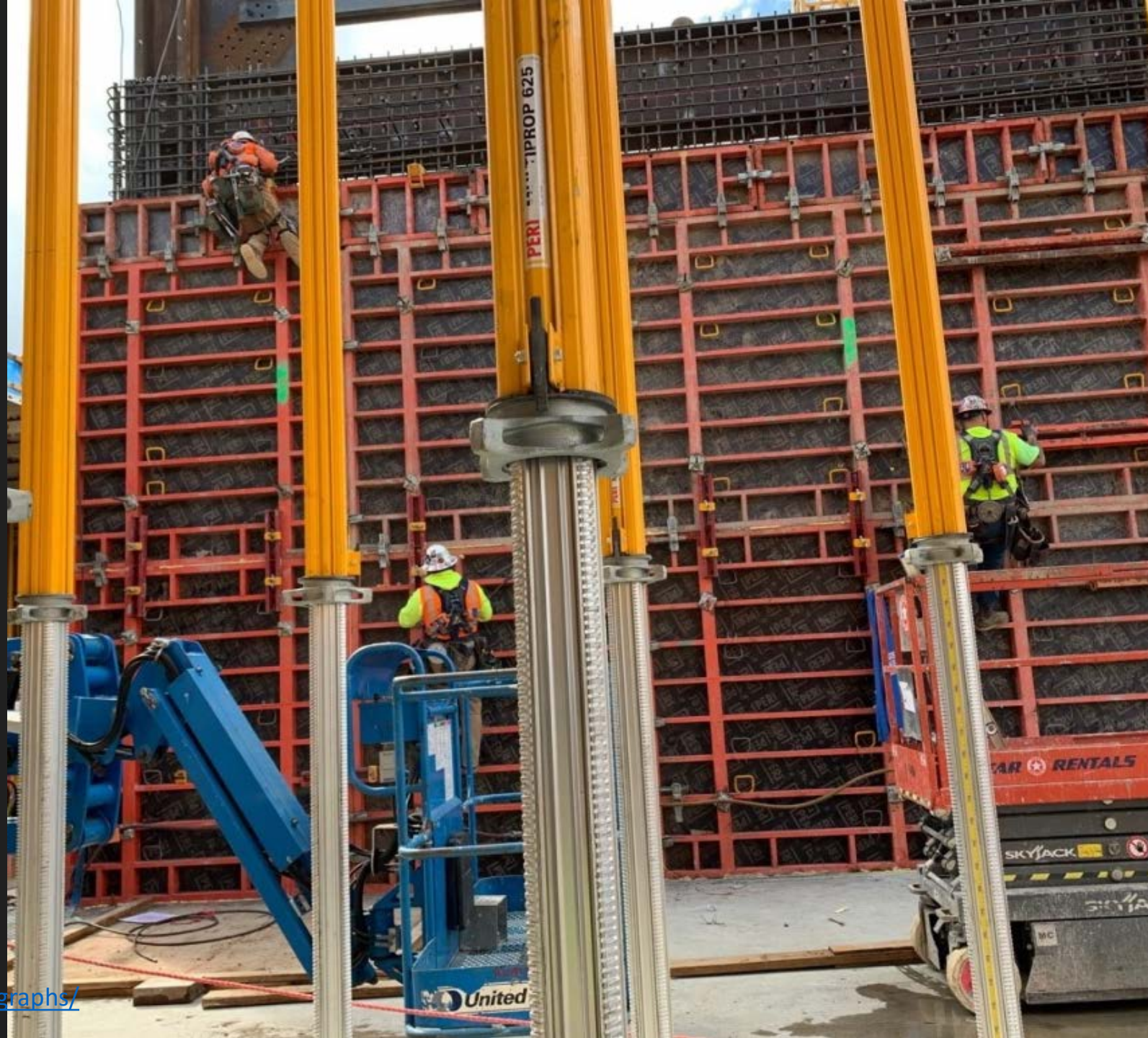
# Designating Separate Entry and Exit Points

---





# Adjusting Crew Work Areas



Photos courtesy of the Oregon Building Trades

<http://www.oregonbuildingtrades.com/covid-19-safety-photographs/>



# Addressing Sanitation – High Touch Areas



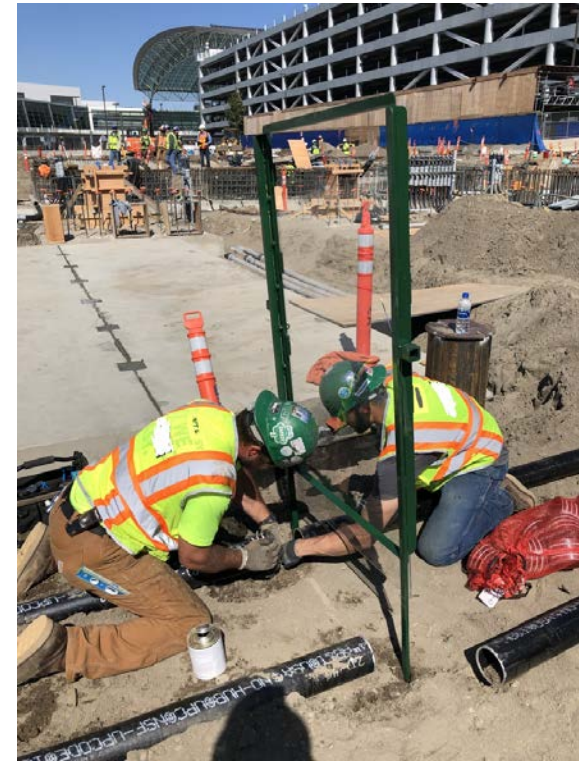
# Creating Solutions

---



Hand sanitizer station with SDS

Photos courtesy of the Oregon Building Trades <http://www.oregonbuildingtrades.com/covid-19-safety-photographs/>



Worker with plexiglass between them

# Communication and Training

| Question  | Answer           |
|---|------------------|
| How are you limiting groups to fewer than 10 people?                              | Communicating    |
| How do you plan on minimizing the amount of people in one area?                   | Communicating    |
| How are you going to maintain the 6ft distance during work and social activities? | By staying aware |
| Are there any other items that need addressed to maintain a safe workspace?       | No               |

Daily Reminders: Discuss the following with your crew each day.

## Personal Hygiene

- Wash your hands with soap and water for at least 20 seconds or use hand sanitizer often at least 60% alcohol
- Cover your mouth and nose with a tissue or sneeze into our elbow when you cough or sneeze
- Don't touch your face, eyes, nose or mouth
- Clean and disinfect frequently touched surfaces
- If you are not feeling well, do not come to work. If not feeling well at work, you need to go home. If you have symptoms possibly related to COVID-19 please contact your personal medical provider and let your supervisor know you are staying home for self-quarantine.

## Requirements

- Maintain 6ft of separation between yourself and others.
  - This includes during work, walking into or around the jobsite, walking in occupied offices or buildings and during social activities.
- Only two people are allowed in a UTV/ ATV (if the

# Addressing Challenges #1: Limiting Manual Materials Handling

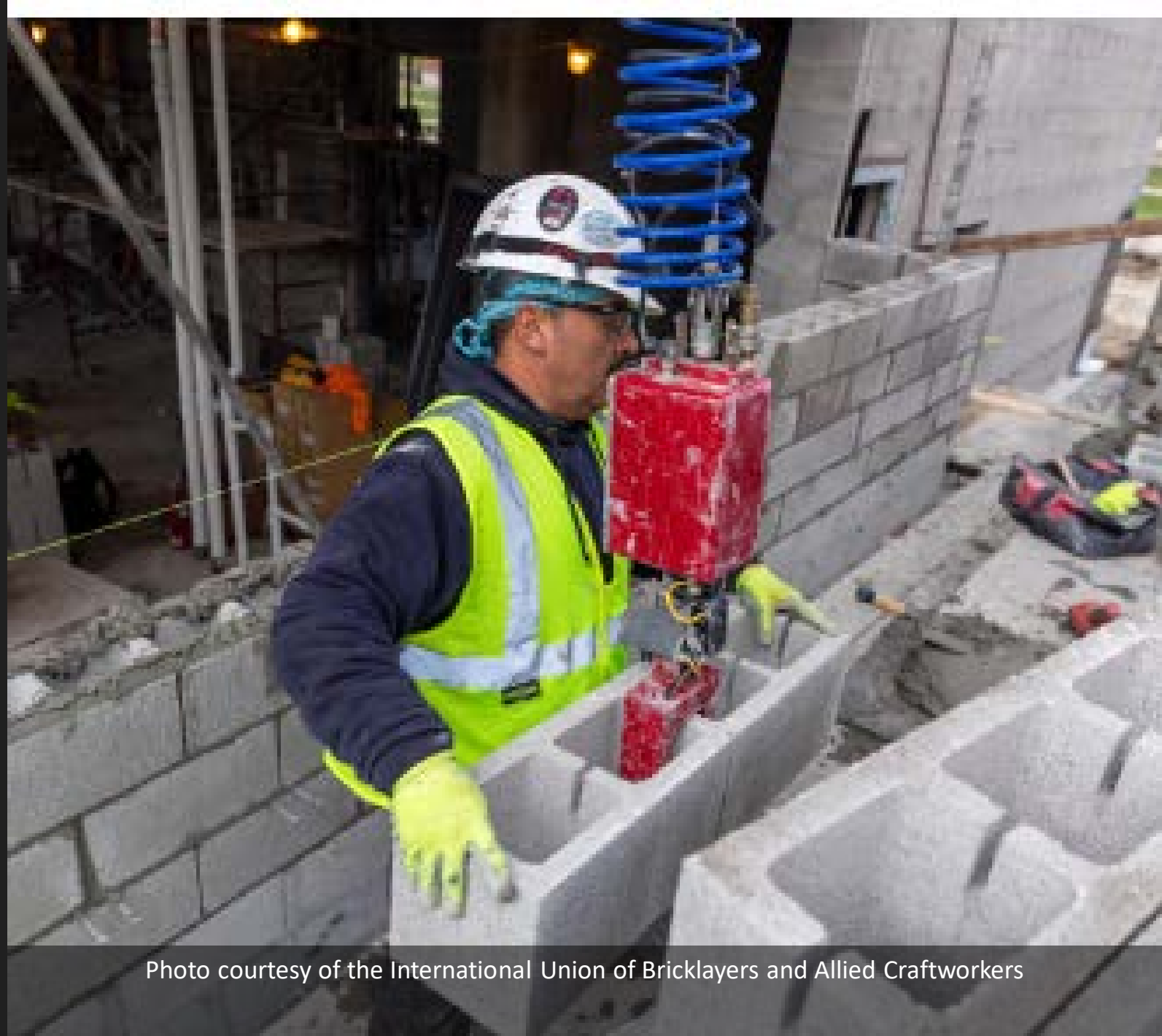


Photo courtesy of the International Union of Bricklayers and Allied Craftworkers





Addressing Challenges #2:  
Making it Easier to Breathe

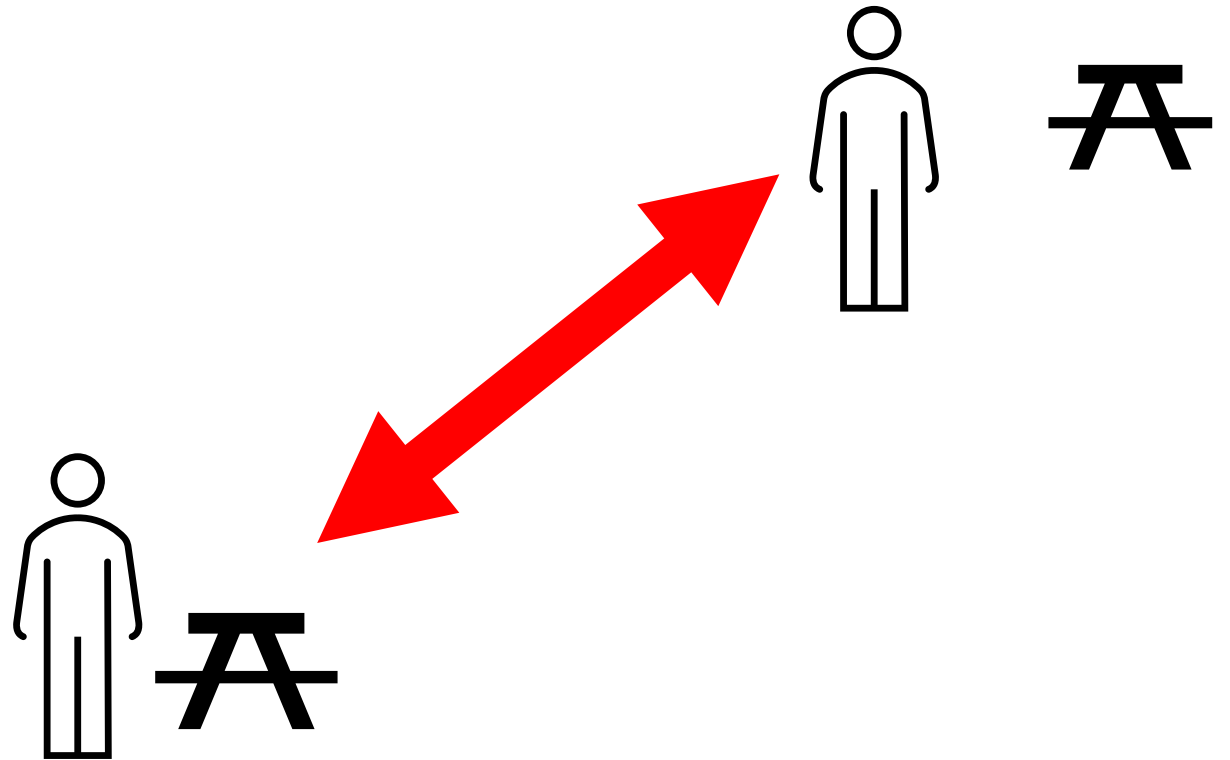
---



**SAFETY IS  
NOT AN  
OPTION!  
IT'S A  
PRIORITY!**



# Addressing Challenges #3: Keeping the Next Generation Safe During Training

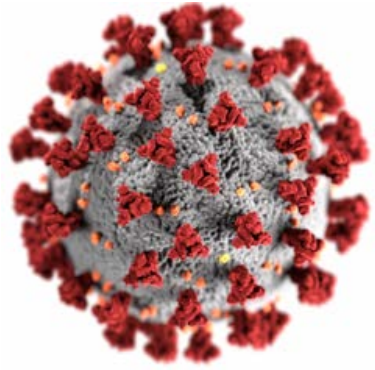




Raising  
Awareness  
and  
Encouraging  
Workers to  
Practice New  
Safety  
Procedures







# COVID-19 Safety in Action -- An Example from the Job Site

## Questions ?



# Safety Glasses Example

<https://tinyurl.com/amzn-safety-glasses>