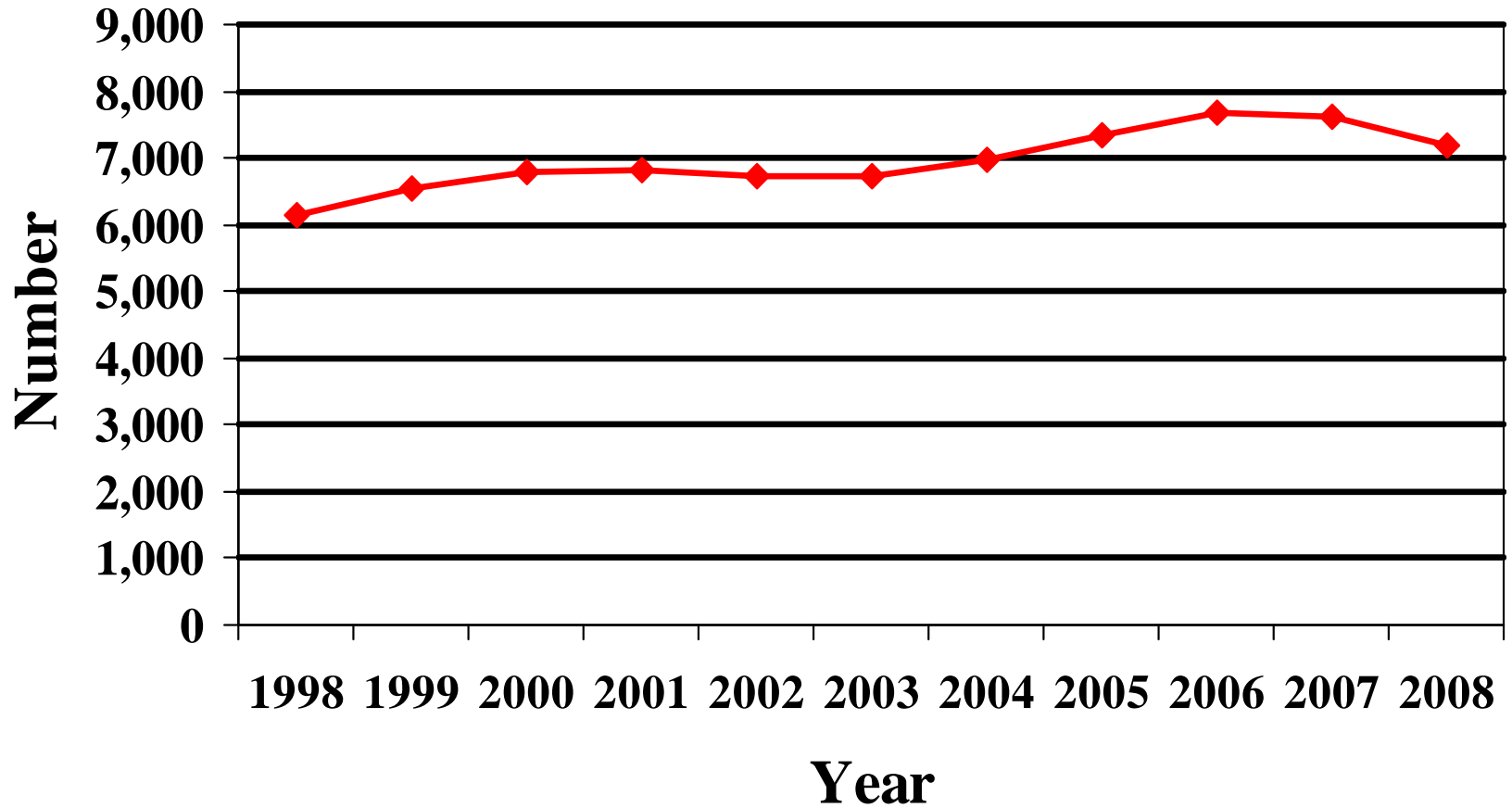


CERN

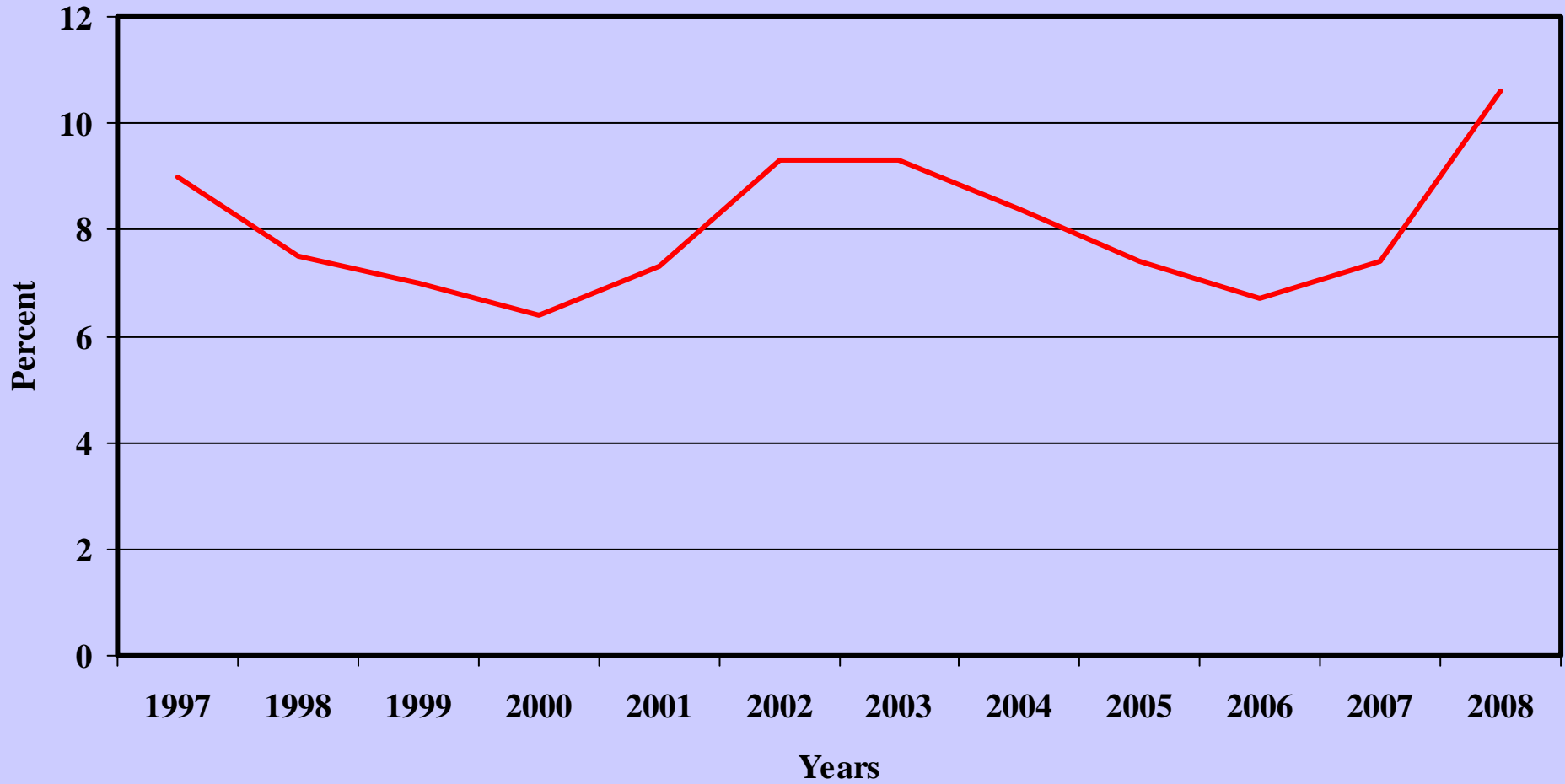
**Union Wage Plus Fringe
Trends**

April 2009

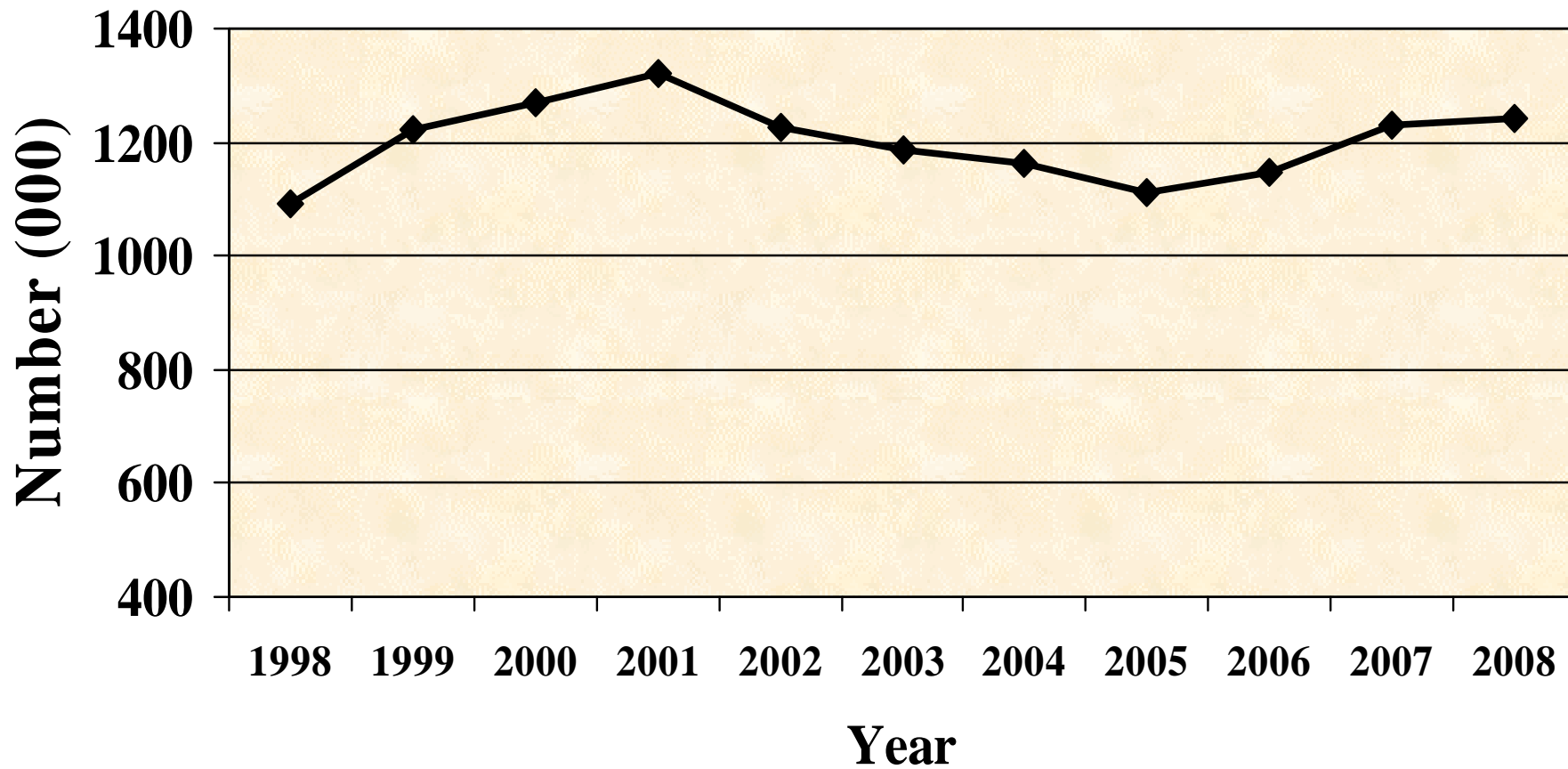
Construction Employment (000)



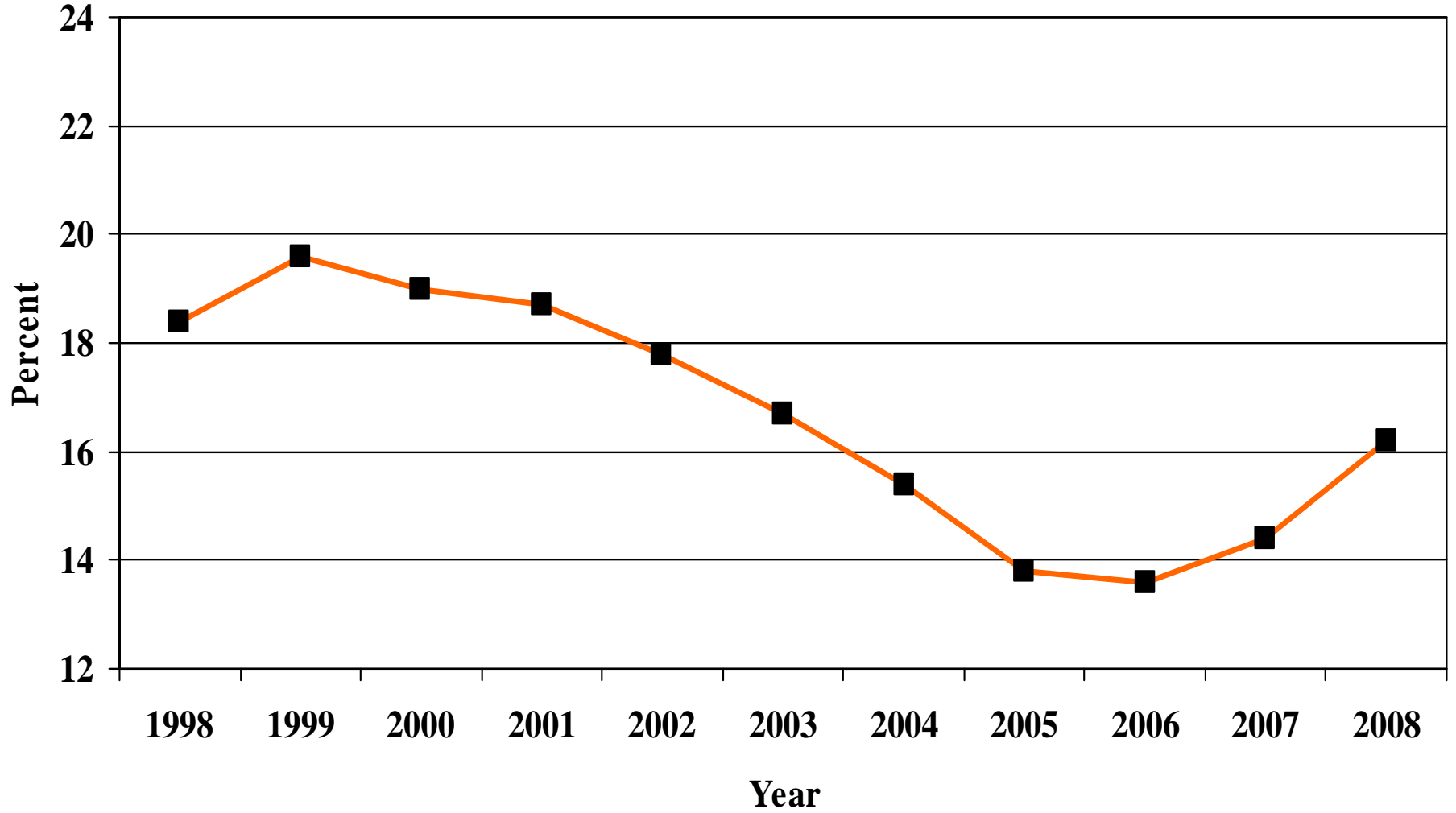
Construction Unemployment Rate



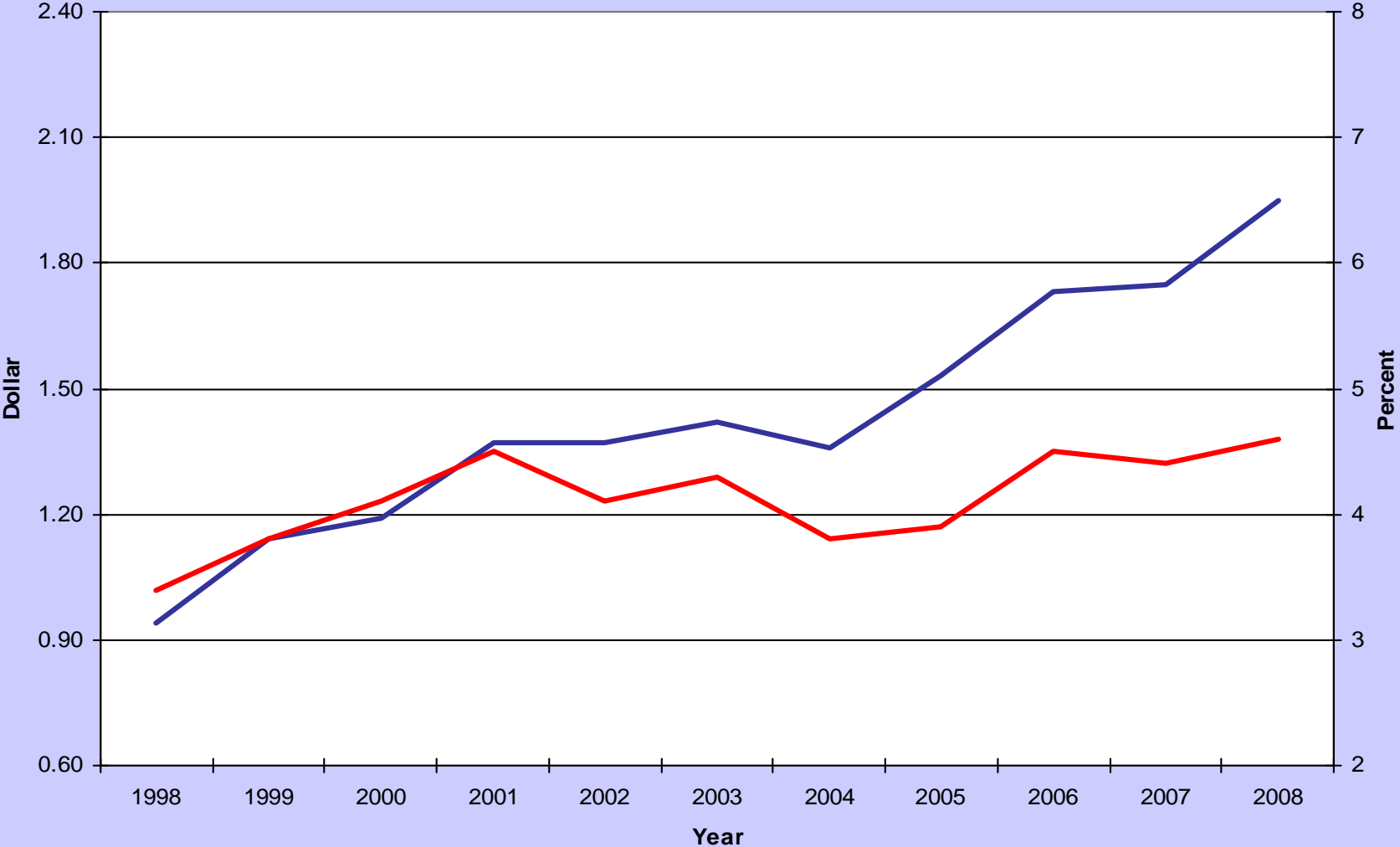
Total Construction Union Employment Number



Total Construction Union Employment Percentage

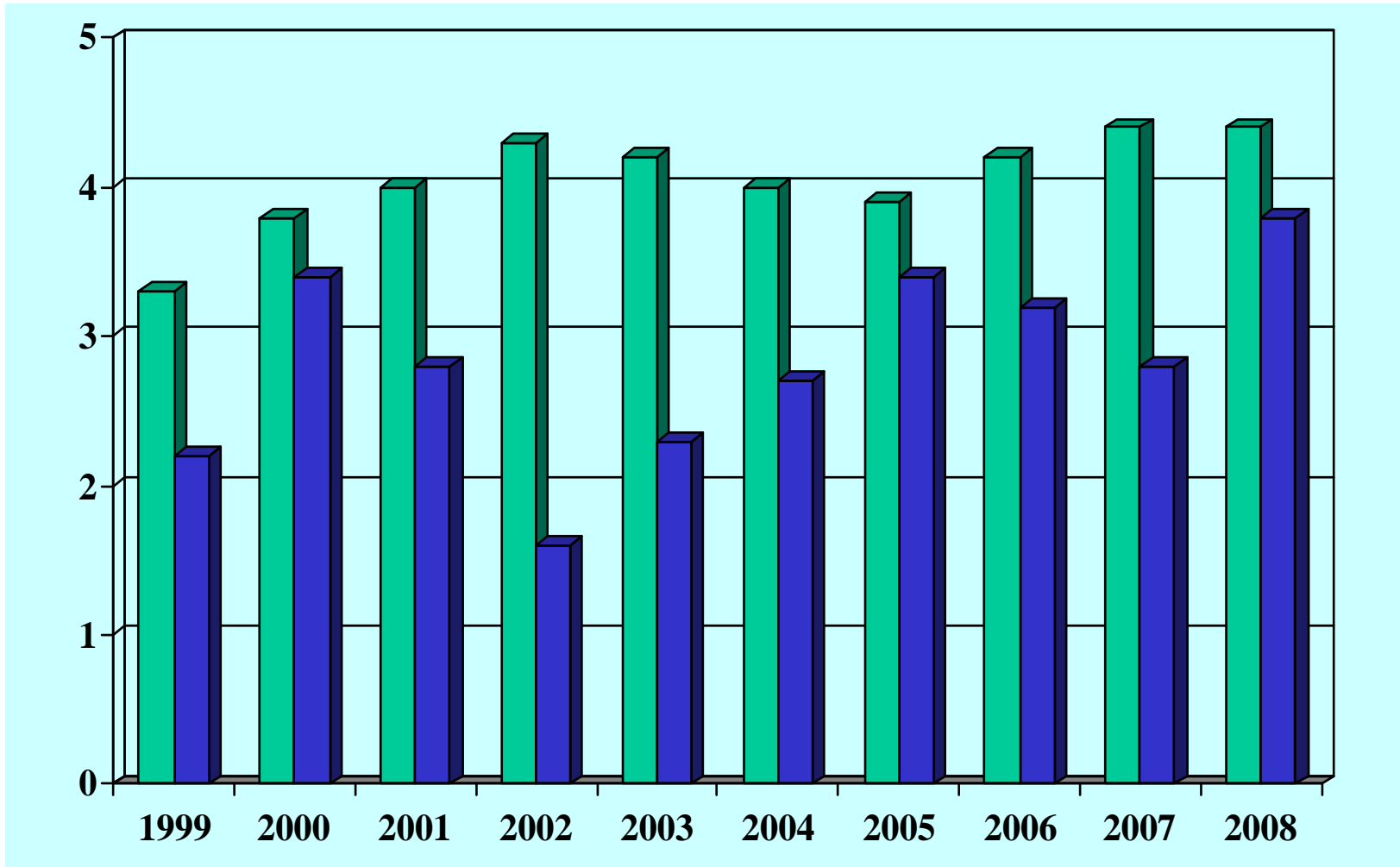


1st Year Settlements



— Dollar — Percent

Wage and Fringe Increases vs CPI



■ Wage & Fringe ■ CPI

Factors Influencing 2009 Bargaining

Lower Volume

Disappearance of Inflation

Weakening Pension Finances

Stimulus Program